



## NOTICE TO MARINERS N° 3 - 2010

### Warning Notice to Fishermen - Newhaven Harbour

Fishermen are hereby reminded that the placing of nets, pots or any other obstruction within the navigable channels of Newhaven Harbour is prohibited.

This includes the approach channel as indicated on the attached chart.

This is not something new, as Notices were issued in 1994 and 2002 on the same subject.

You are also reminded that it is an EEC Regulation that marker buoys are clearly marked with the vessel's registration letter and number.

Any obstructions may be removed without warning.

Your cooperation is appreciated.

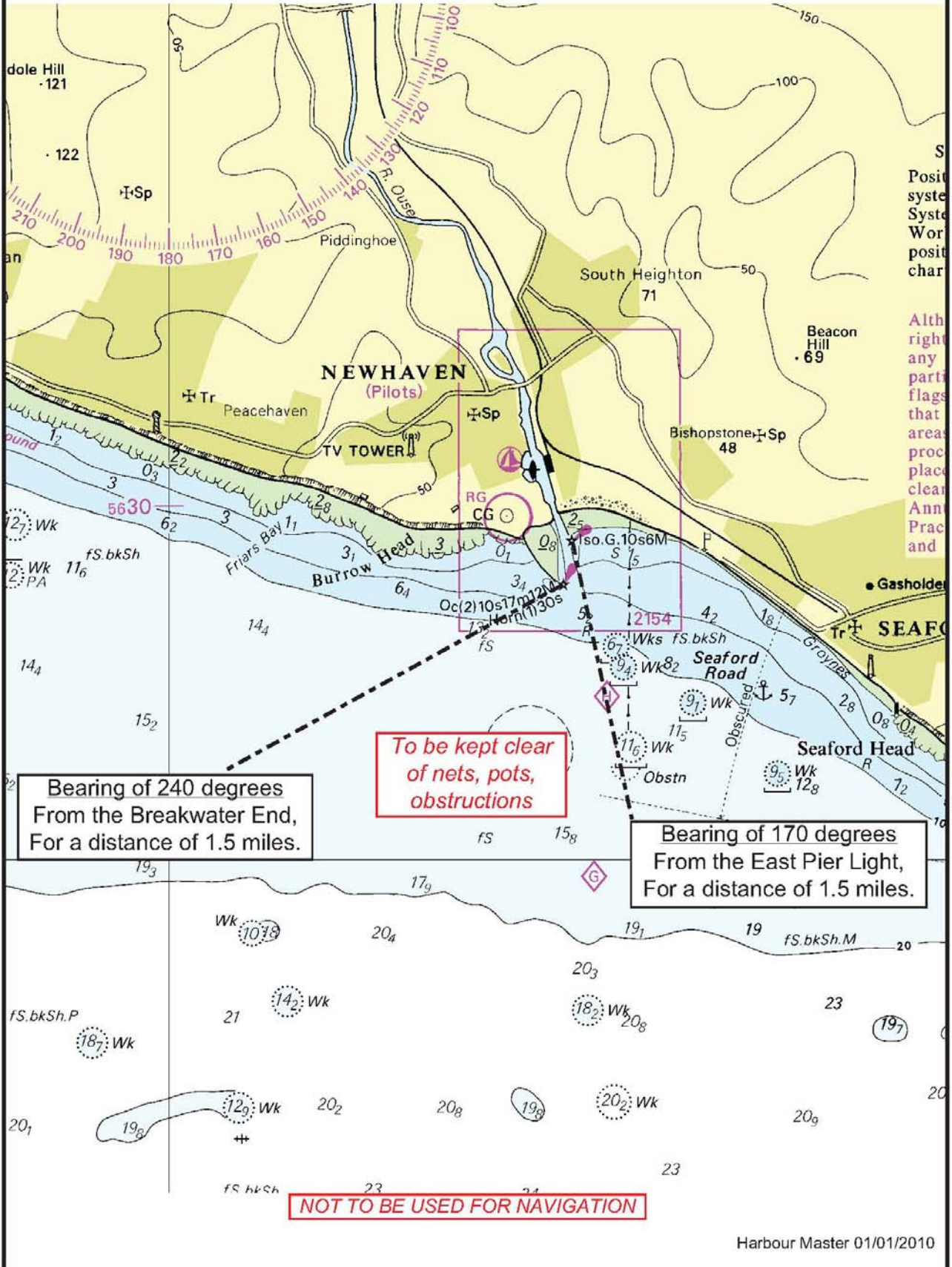
Mariners encountering any problems or requiring further information should contact "**Newhaven Radio**" - **VHF Channel 12**. Tel. 01273 612926.

*D C Collins-Williams*

Capt. Dave Collins-Williams  
Harbour Master  
Newhaven Port

Issued: 4<sup>th</sup> January 2010

# Warning Notice to Fishermen



Bearing of 240 degrees  
From the Breakwater End,  
For a distance of 1.5 miles.

To be kept clear  
of nets, pots,  
obstructions

Bearing of 170 degrees  
From the East Pier Light,  
For a distance of 1.5 miles.

NOT TO BE USED FOR NAVIGATION